

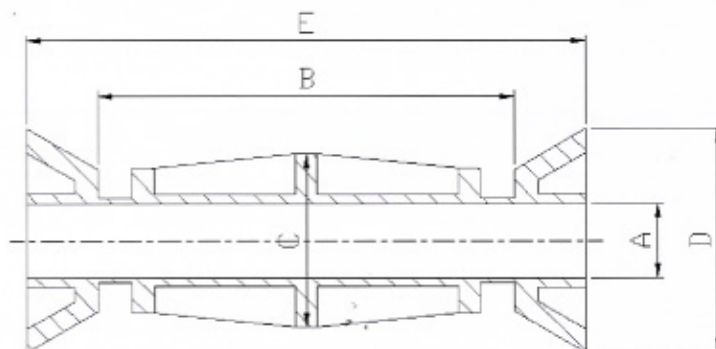
Quick Thru Hole :

is a plastic insert to create hole
in concrete wall.

It's round recess on both side is design
for easily remove and grout.



Code **QU**



Description	Part No.	Dimensions/mm.						SWL	Packing
		A	B	C	D	E	F		
Quick Thru Hold (Q.U)	QU-M12100	13	13.2	74.5	31	40	100	500 kg.	100
	QU-M12120	13	13.2	94.5	31	40	120	500 kg.	100