

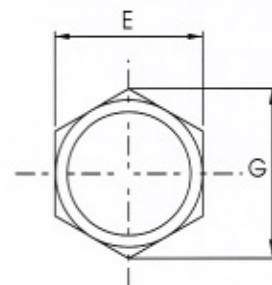
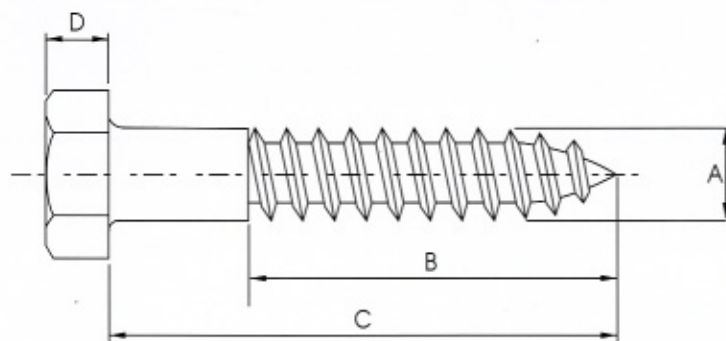
**Haxagon Tapping Screw**

A screw DIN 571 for

Quick Tapping Anchor (QA)



Code **HT**



Description	Part No.	Dimensions/mm.						SWL	Packing
		A	B	C	D	E	G		
<b>Haxagon Tapping Screw (HT)</b>	HT-8060	8	40	60	5.5	13	14.2	300 kg.	100
	HT-1270	12	45	70	8	19	20.8	500 Kg.	100

Instruction : Screw in Quick Tapping Anchor (QA)

to install panel on concrete wall.